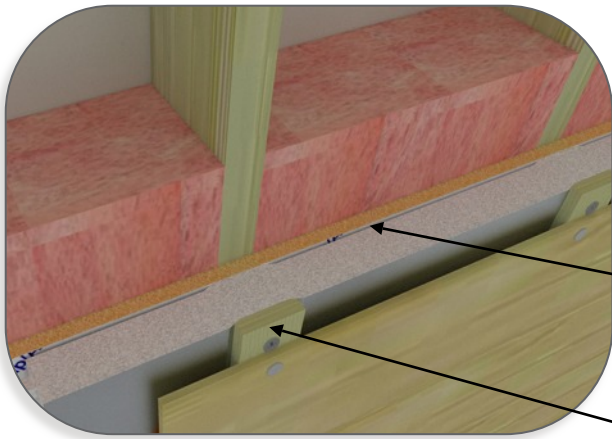


## 4 in 1 Continuous Insulation System NO Double Vapour Barrier



- ✔ DRAINAGE PLANE
- ✔ RAIN SCREEN
- ✔ EXTERIOR WEATHER BARRIER
- ✔ JAMES HARDIE SIDING COMPLIANT

A patent pending high performance tongue and groove continuous rigid insulation system manufactured from lightweight and resilient Type 2 high density expanded polystyrene (EPS) covered with advanced metallic polymer facers.

- Solar Dry is a second plane of protection that eliminates the potential for a double vapour barrier.
- Located on the inboard side of SDI are 3/16" deep by 13" wide drainage cavities. These cavities allow walls to breathe, drain, dry and disperse moisture.
- Minimum 3/4" thick furring materials such as wood or steel are fastened through SDI panels directly to framing members - creating a code compliant rain screen.

## Industry Comparison

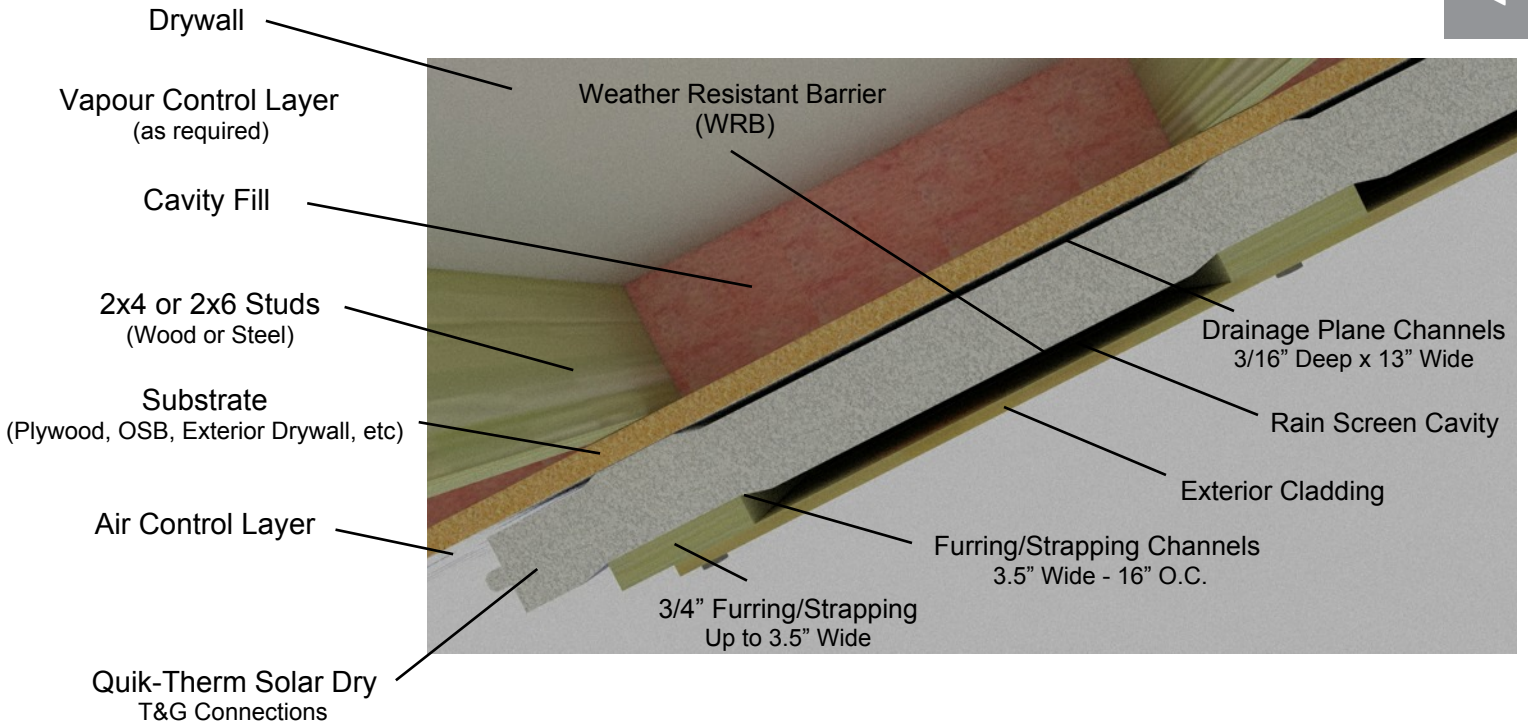
Feature	Quik-Therm Solar Dry	Rock Wool
Product Handling	Minimal dust and will not cause itching	Very dusty fibrous product - itchy to use - must wear gloves and eye protection
Ease of Application	Installs fast - Lightweight, full size sheets (4'x8') with T&G connections for ease of panel alignment and inherent grooves for strapping	Installs relatively slower - Heavier, smaller sheets, strapping locations need to be measured, panels not self aligning
Durability	Durable Type 2 EPS will not chip, crack or break	Brittle, comes apart if not handled carefully
Compressibility	Type 2 EPS will not compress under normal application, providing an even wall surface	Compresses unevenly when strapping is installed, leaving an uneven wall surface
Moisture Absorption & Wind Washing	IMPERMEABLE Closed cell - Does NOT absorb moisture - NO Wind washing	Potential to absorb and trap moisture - Susceptible to wind washing
Moisture & Drainage	Inherent drainage planes allow moisture to drain and dry	Product installs tight to wall which reduces its potential to drain or dry out
Storage	Shipped in lightweight bundles - easy to transport and store	Heavy, bulky and awkward to handle



# Quik-Therm Solar Dry (SDI)

SOLAR DRY

## Typical Wall Assembly



CCMC Listing: Type 2 13457-L.

## Testing & Modelling

### ASTM C1363 - Effective R-Value Testing and Energy Modelling

#### Tested

2" Solar Dry with Empty Cavity: Effective R-13.2  
 2" Solar Dry and R-12 Fiberglass: Effective R-23.1

#### Modelled / ASHRAE

1.5" Solar Dry and R-20 Fiberglass: Effective R-26.55  
 2" Solar Dry and R-20 Fiberglass: Effective R-28.3

**NOTE:** Substitute mineral wool insulation for fiberglass - add an effective R-1 to the assembly.

### Typical Physical Properties

#### Property

R-Value Testing  
 Nominal Density (pcf)  
 Compressive Strength (psi, 10% deformation)  
 Water Vapour Transmission (perms)  
 Flame Spread  
 Smoke Developed

Type 1  
 Type 2 - 1.4  
 19.7  
 <1.0  
 250  
 410

#### Test Method

ASTM C1363  
 ASTM D1622-03  
 ASTM D1621-04a  
 ASTM E96  
 CAN/ULC-S102.2  
 CAN/ULC-S102.2

**NOTE:** Passed CAN/ULC-S101 (15 minute stay in place fire testing).

